

# BRIK HAUS

BUILD, DESIGN, DISPLAY



# BRIK HAUS

BUILD, DESIGN, DISPLAY

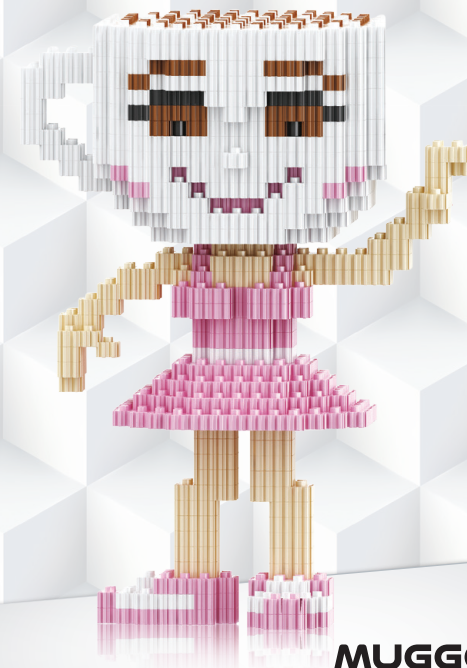


**720  
PIECES**

**15.8  
CM  
TALL**



 Hammer included for secure brick fitting.



**MUGGO POP**

ITEM NO: 68732

**WARNING:**  
**CHOKING HAZARD— Small Parts.**  
Not for children under 3 years.

**WARNING:** FOR SAFETY REASONS, REMOVE ALL PACKAGING, TAGS, LABELS AND PLASTIC FASTENERS BEFORE GIVING THIS TOY TO YOUR CHILD.

**ADULT ASSISTANCE IS RECOMMENDED.**  
**PRODUCT MAY VARY SLIGHTLY FROM IMAGE SHOWN.**  
**PLEASE KEEP PACKAGING FOR FUTURE REFERENCE.**



© 2026 Good Idea Global  
Suite 1(A)/207-209 Warrigal Road,  
Hughesdale, Victoria, 3166  
Melbourne, Australia  
[www.goodideaglobal.com](http://www.goodideaglobal.com)

1

WHEN YOU OPEN YOUR SET, DON'T DUMP ALL THE ZIGLOCK BRICKS INTO A BIG PILE.

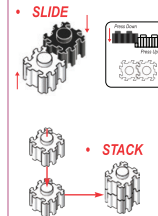
KEEP EACH SET OF BRICKS IN ITS OWN GROUP. SORT THEM BY SIZE, SINGLE, DOUBLE AND TRIPLE AND THEN BY COLOURS.

IT'LL MAKE BUILDING WAY EASIER AND MORE FUN!

2

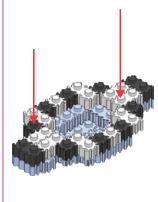
HOW TO PUT TOGETHER THE ZIGLOCK BRICKS:

LINE UP THE GROOVES AND SLIDE AND STACK TOGETHER.



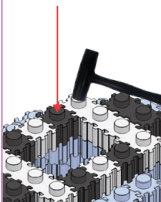
4

ARROWS SHOW WHICH BRICK CONNECTS TO THE NEXT LAYER OF BRICKS.



5

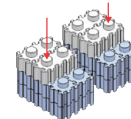
USE THE HAMMER TO GENTLY TAP THE PIECES SO THE LAYERS STICK TOGETHER TIGHTLY.



ADULT ASSISTANCE IS RECOMMENDED. PRODUCT MAY VARY SLIGHTLY FROM IMAGE SHOWN.

3

THE LIGHT BLUE PART SHOWS WHAT YOU FINISHED IN THE STEP BEFORE.



6

DON'T GIVE UP! ZIGLOCK BUILDS TAKE A LITTLE GETTING USED TO, BUT ONCE YOU ARE LOCKED IN, AND A FEW LAYERS LATER, YOU'LL BE BUILDING LIKE A PRO.

SCAN THE QR CODE FOR SOME VISUAL TIPS.



SCAN ME

Assembly diagram showing gear connections:

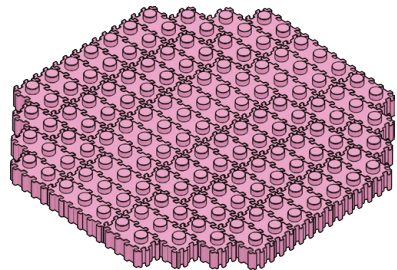
- Top row: Gear assembly sequence with arrows indicating connections.

Parts list:

- Black: X2, X2
- Brown: X11, X39, X7
- Yellow: X3, X80, X18
- White: X18, X178, X108, X28
- Pink: X14, X145, X56
- Grey: X9

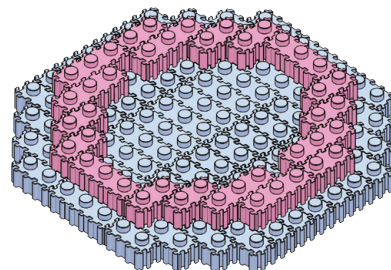
1

X47 X17



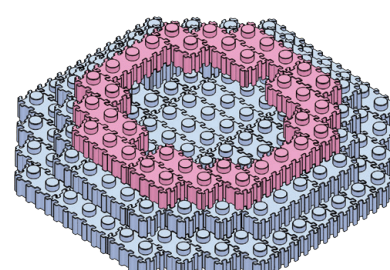
2

X10 X8

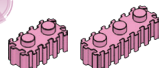


3

X6 X8



4



X8 X6



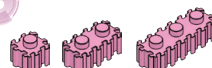
5



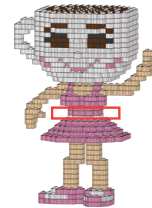
X2 X4 X2



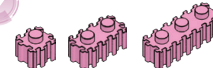
6



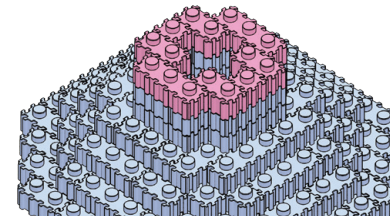
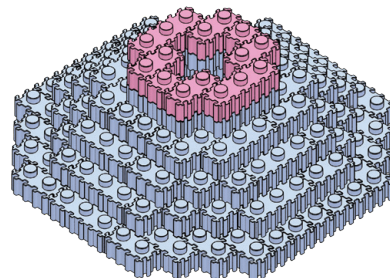
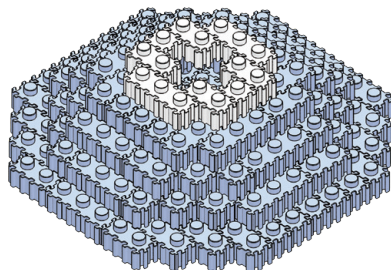
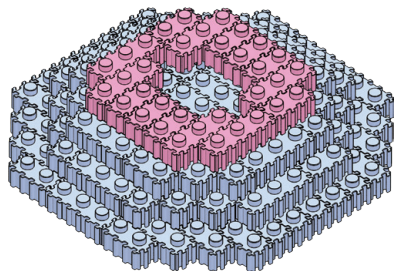
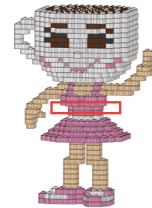
X2 X4 X2

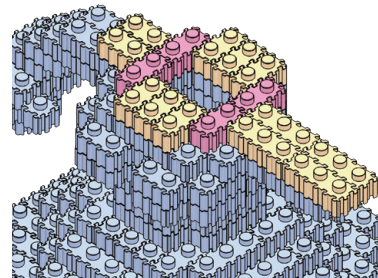
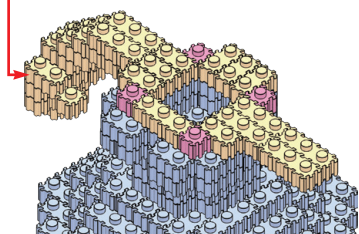
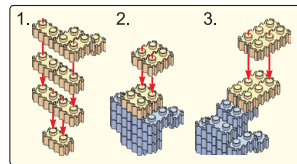
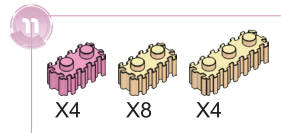
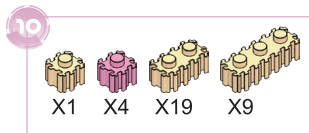
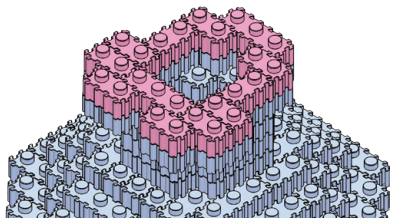
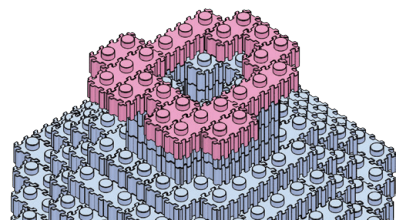
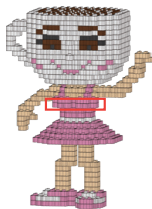
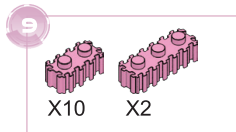
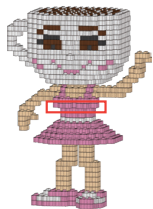
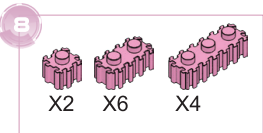


7

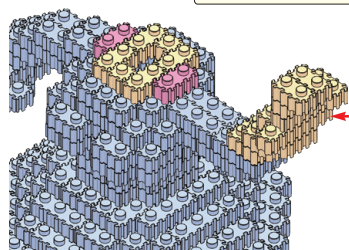
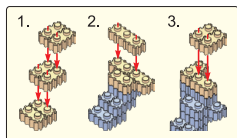
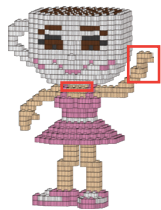
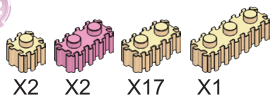


X2 X4 X2

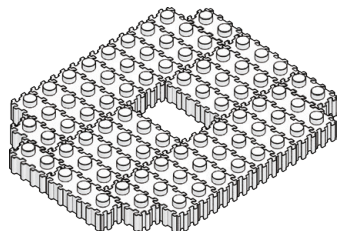
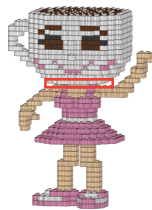
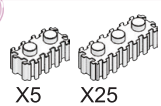




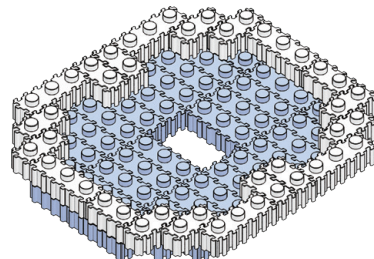
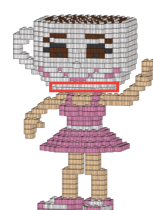
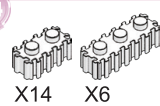
12



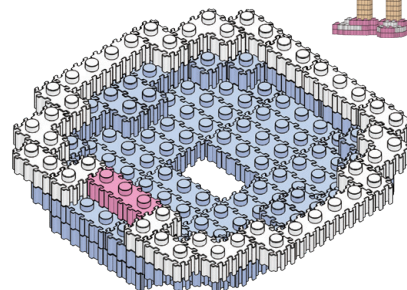
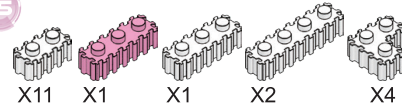
13



14

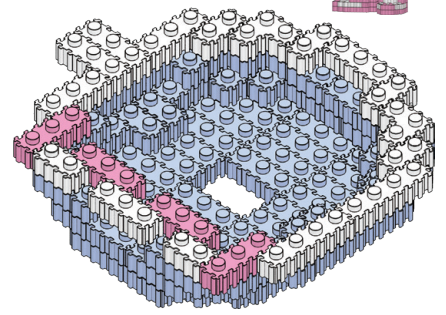
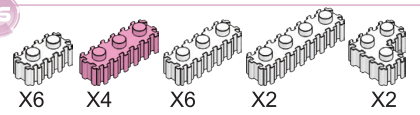


15



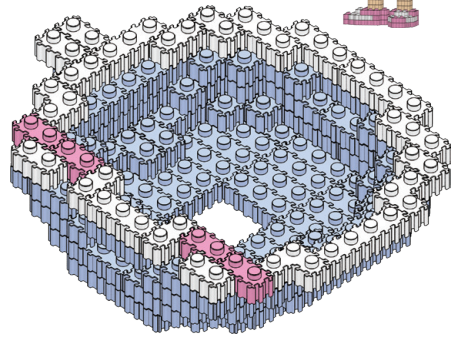
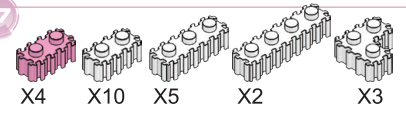
BUILD. SMART. TIPS

16

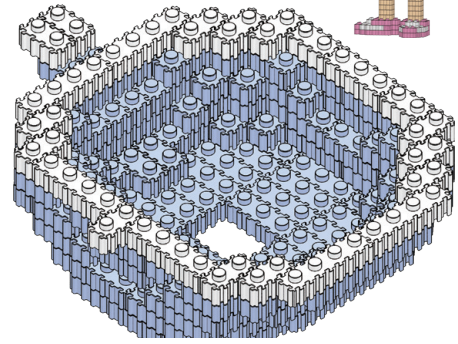
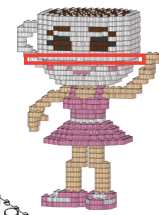
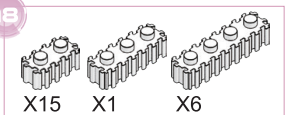


BUILD. SMART. TIPS

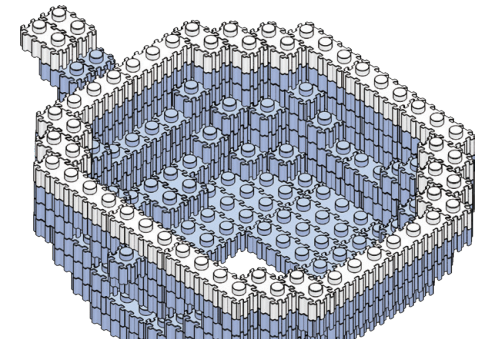
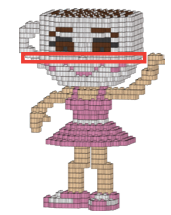
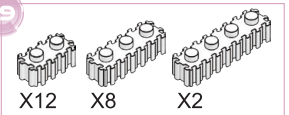
17



18

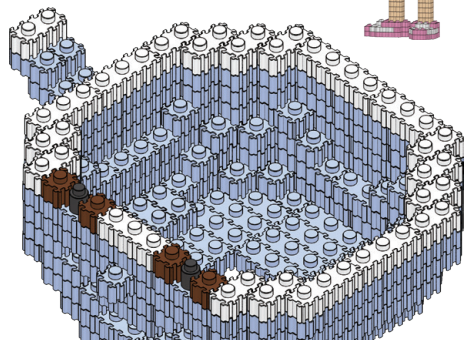
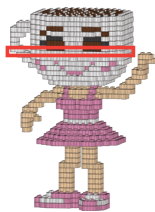
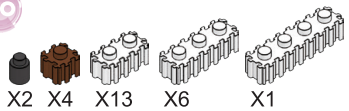


19



BUILD, SMART, TIPS

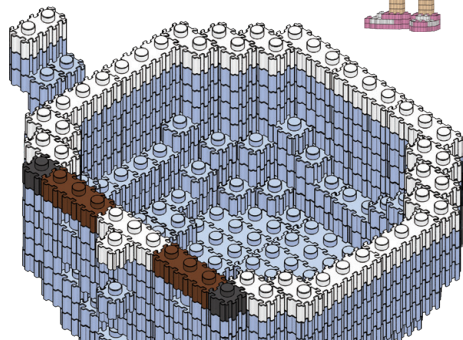
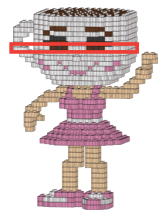
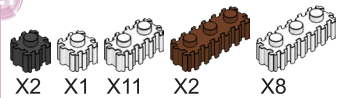
20



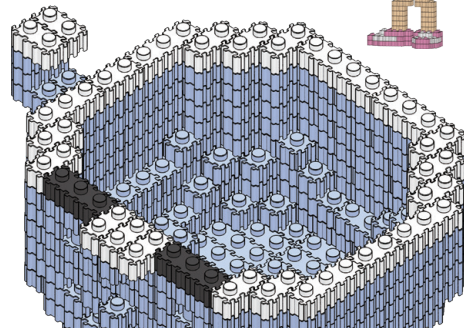
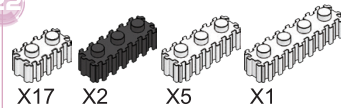
12

BUILD, SMART, TIPS

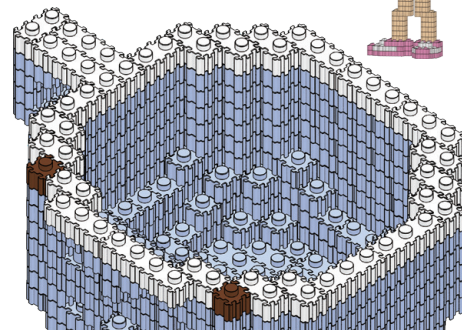
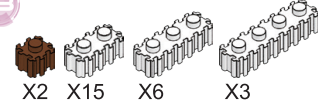
21



22



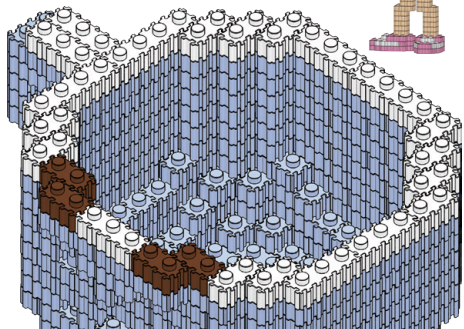
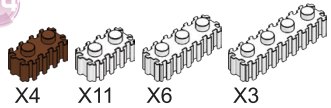
23



13

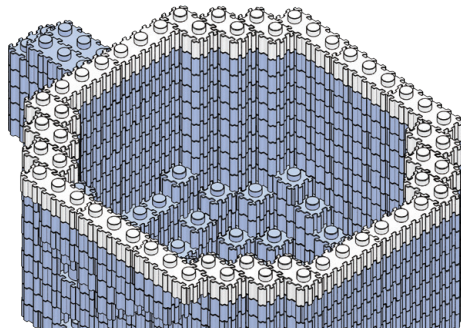
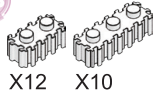
BUILD, SMART, TIPS

24

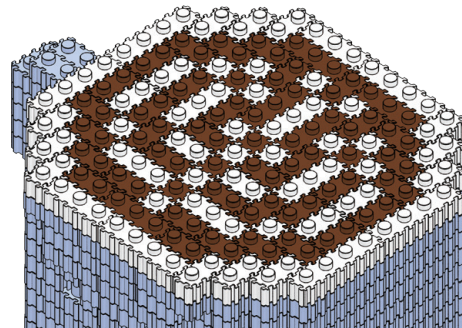
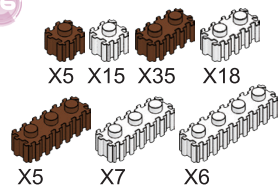


BUILD, SMART, TIPS

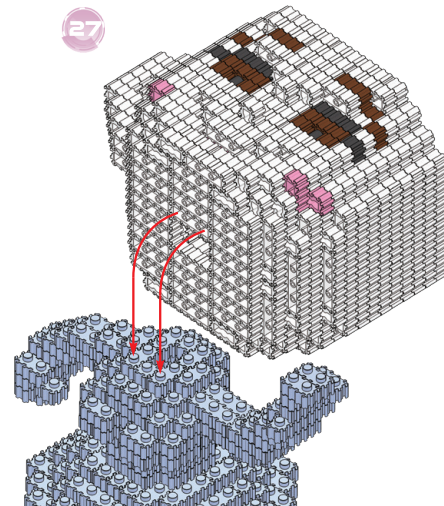
25



26

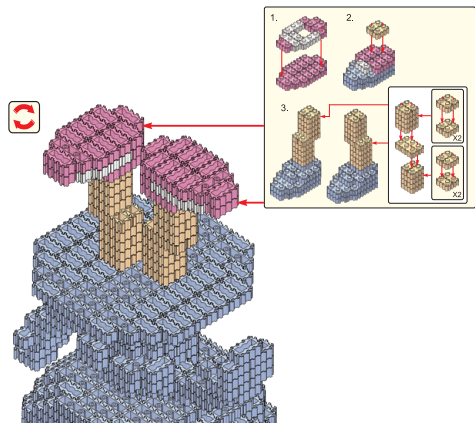
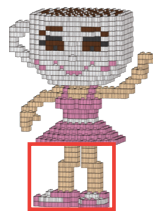
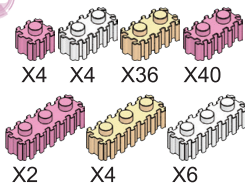


27



NOW ATTACH THE HEAD TO THE BODY

28



**YOU DID IT!**

Your model is now complete. Display and Enjoy!

