

BRIK HAUS

BUILD, DESIGN, DISPLAY

10+


BRIK HAUS


BUILD, DESIGN, DISPLAY

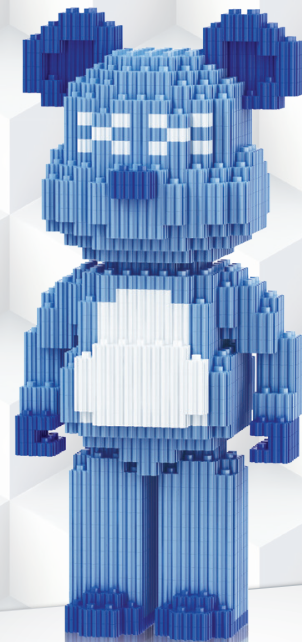
10+

538
PIECES

18.8
CM
TALL



 Hammer included for secure brick fitting.



FROSTBYTE

ITEM NO: 68399

WARNING:
CHOKING HAZARD— Small Parts.
Not for children under 3 years.

WARNING: FOR SAFETY REASONS, REMOVE ALL PACKAGING, TABS, LABELS AND PLASTIC FASTENERS BEFORE GIVING THIS TOY TO YOUR CHILD.

ADULT ASSISTANCE IS RECOMMENDED.
PRODUCT MAY VARY SLIGHTLY FROM IMAGE SHOWN.
PLEASE KEEP PACKAGING FOR FUTURE REFERENCE.



© 2026 Good Idea Global
Suite 1(A)/207-209 Warrigal Road,
Hughesdale, Victoria, 3166
Melbourne, Australia
www.goodideaglobal.com

1

WHEN YOU OPEN YOUR SET, DON'T DUMP ALL THE ZIGLOCK BRICKS INTO A BIG PILE.

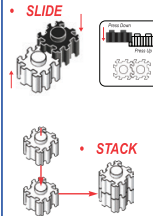
KEEP EACH SET OF BRICKS IN ITS OWN GROUP. SORT THEM BY SIZE, SINGLE, DOUBLE AND TRIPLE AND THEN BY COLOURS.

IT'LL MAKE BUILDING WAY EASIER AND MORE FUN!

2

HOW TO PUT TOGETHER THE ZIGLOCK BRICKS:

LINE UP THE GROOVES AND SLIDE AND STACK TOGETHER.

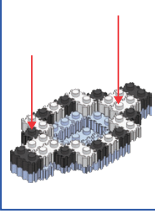


• SLIDE

• STACK

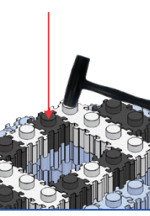
4

ARROWS SHOW WHICH BRICK CONNECTS TO THE NEXT LAYER OF BRICKS.



5

USE THE HAMMER TO GENTLY TAP THE PIECES SO THE LAYERS STICK TOGETHER TIGHTLY.

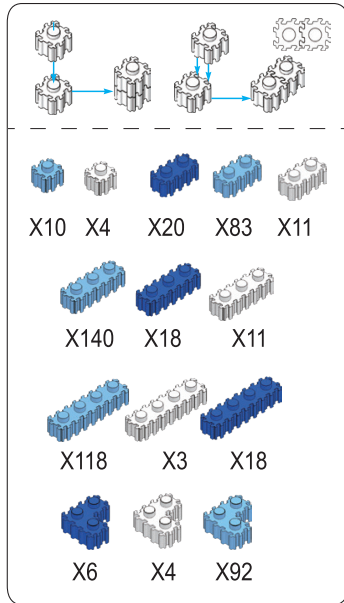


ADULT ASSISTANCE IS RECOMMENDED.
PRODUCT MAY VARY SLIGHTLY FROM IMAGE SHOWN.

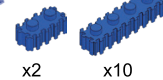
6

DON'T GIVE UP! ZIGLOCK BRICKS TAKE A LITTLE GETTING USED TO, BUT ONCE YOU ARE LOCKED IN, AND A FEW LAYERS LATER, YOU'LL BE BUILDING LIKE A PRO.

SCAN THE QR CODE FOR SOME VISUAL TIPS.



1

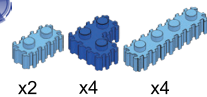


x2

x10



2



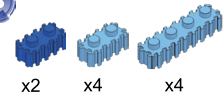
x2

x4

x4



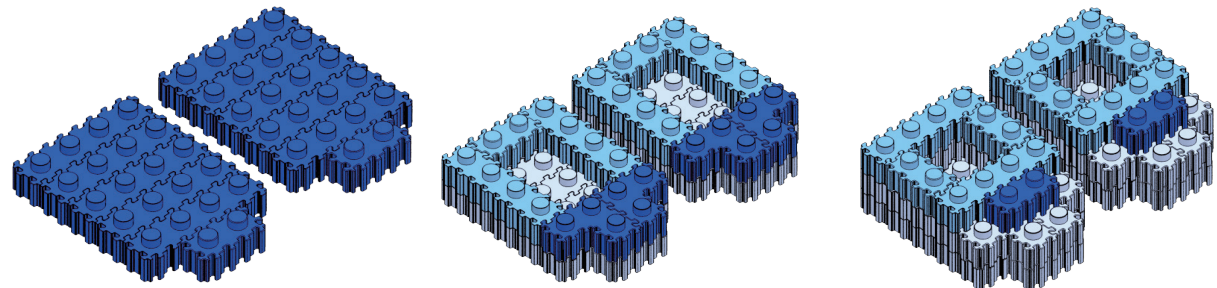
3



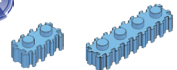
x2

x4

x4

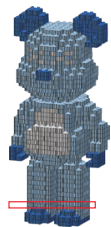


4

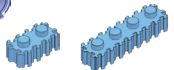


x4

x4

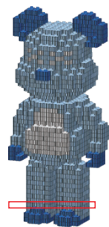


5

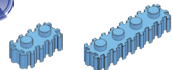


x4

x4



6

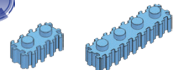


x4

x4

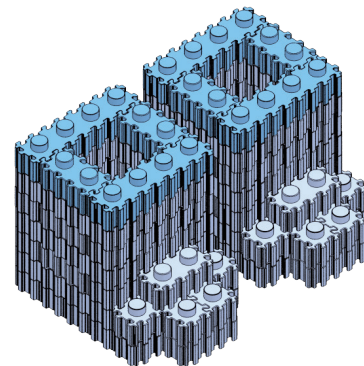
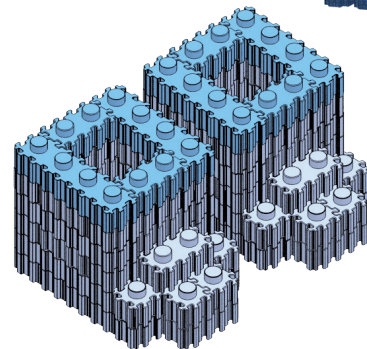
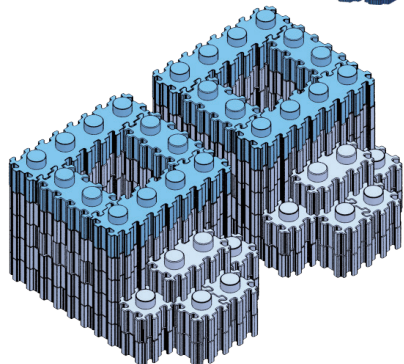
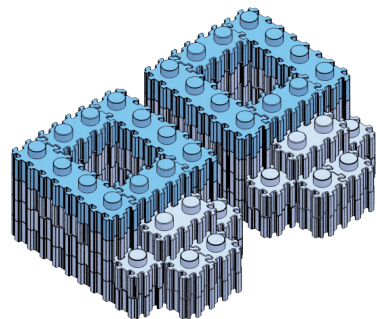


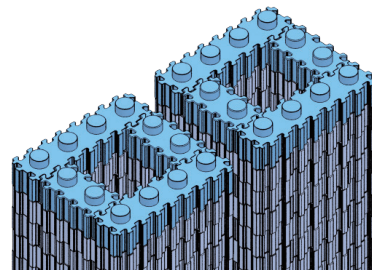
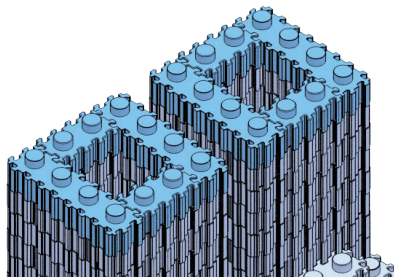
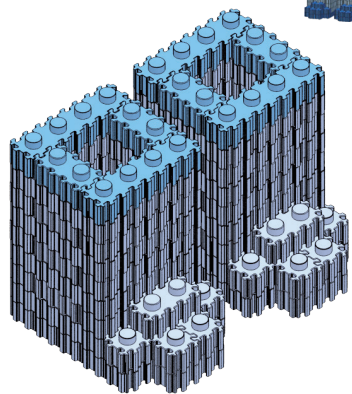
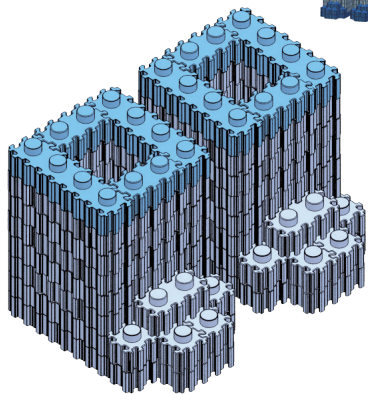
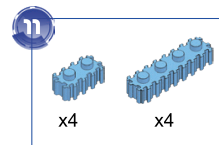
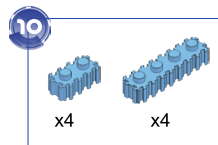
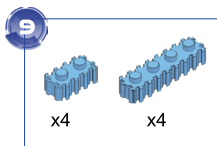
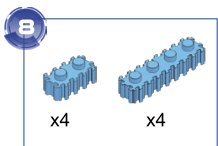
7



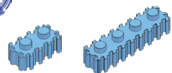
x4

x4



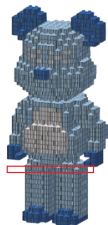


12

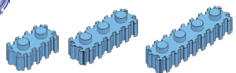


x4

x4



13



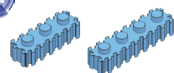
x4

x2

x4



14



x6

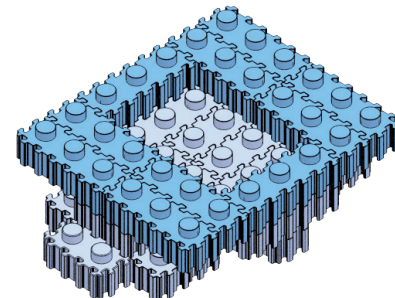
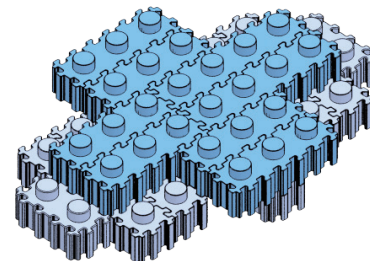
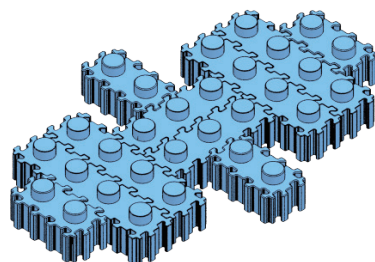
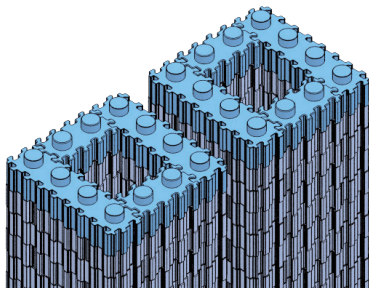
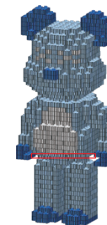
x2



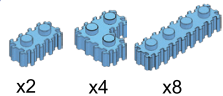
15



x10



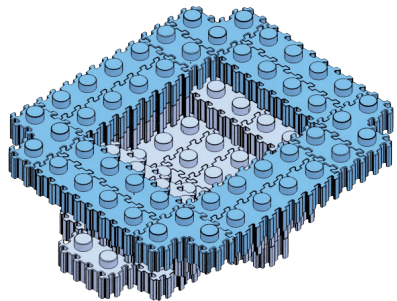
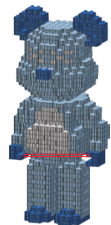
16



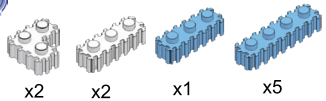
x2

x4

x8



17

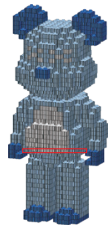
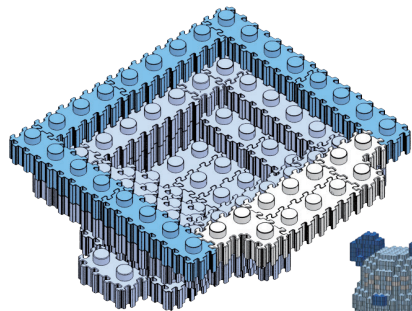


x2

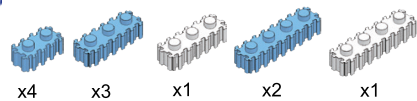
x2

x1

x5



18



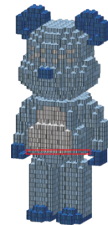
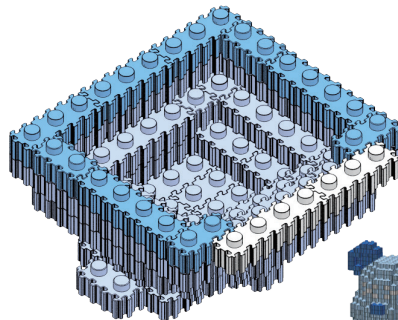
x4

x3

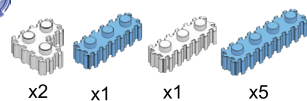
x1

x2

x1



19

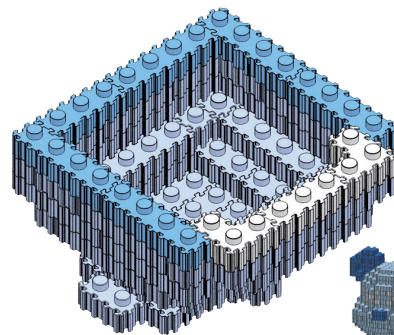


x2

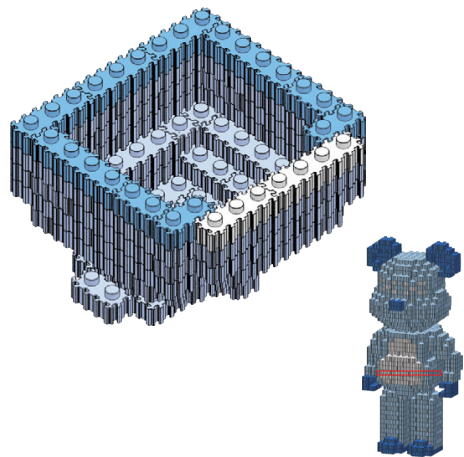
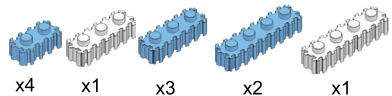
x1

x1

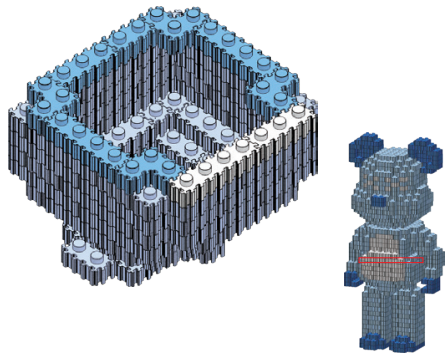
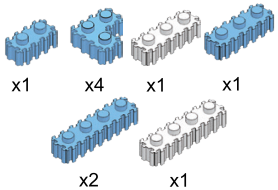
x5



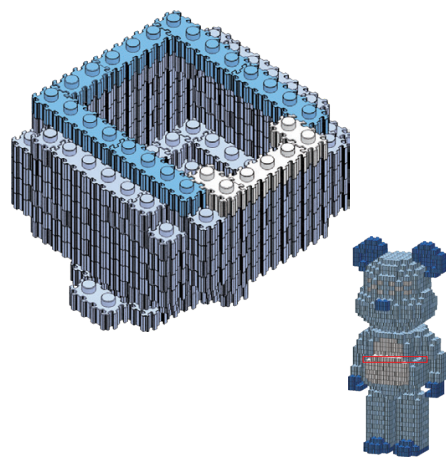
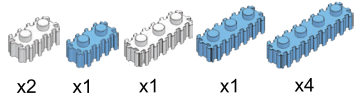
20



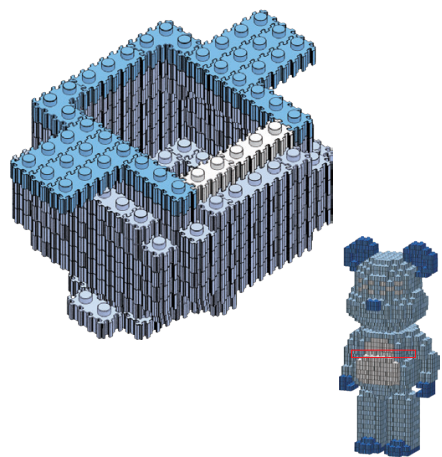
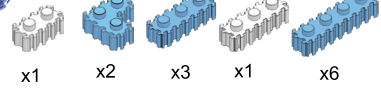
21

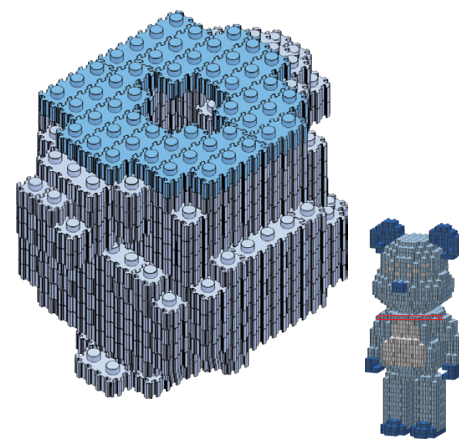
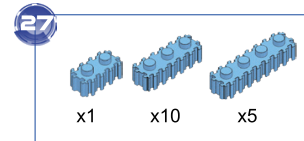
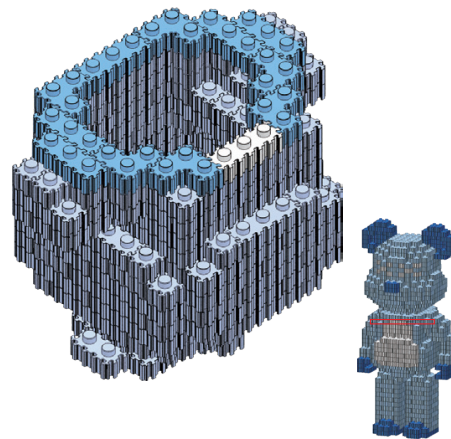
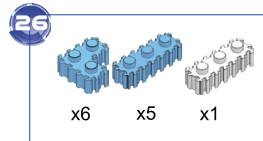
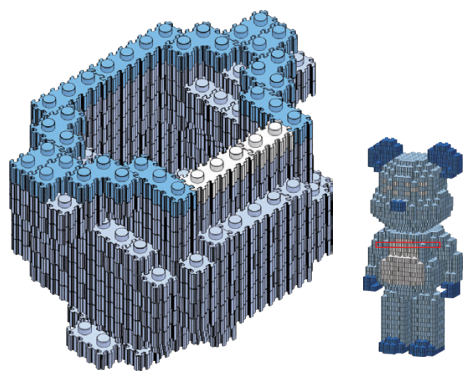
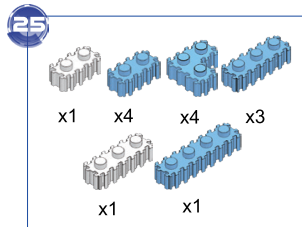
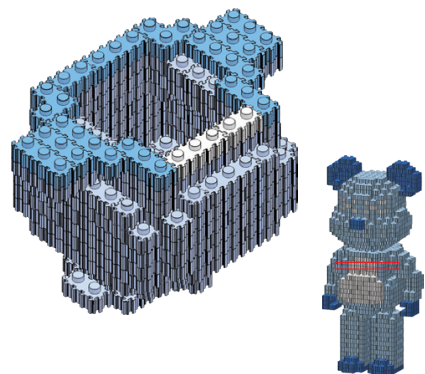
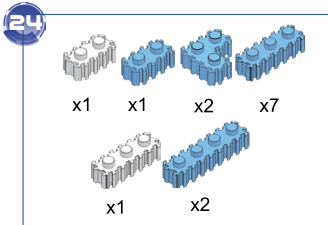


22



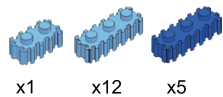
23



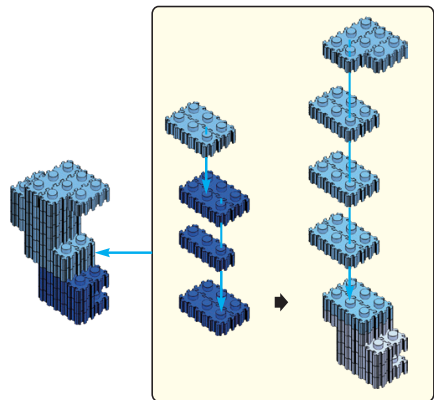
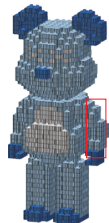


BUILD, SMART, TIPS

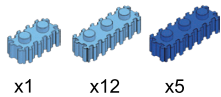
28



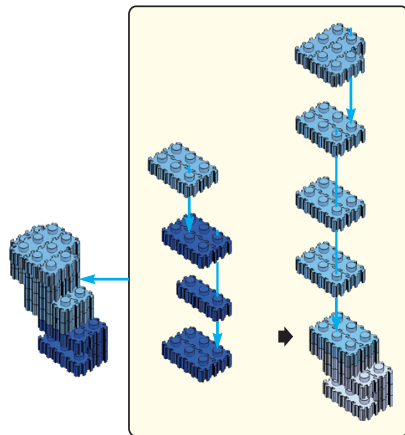
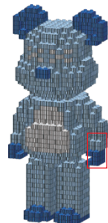
x1 x12 x5



29

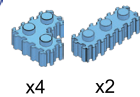


x1 x12 x5

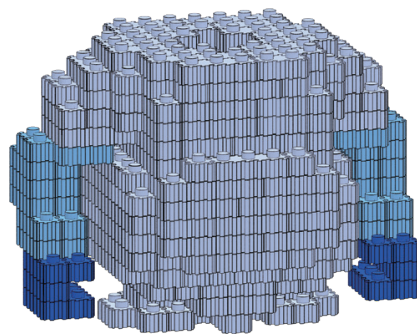
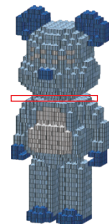


BUILD, SMART, TIPS

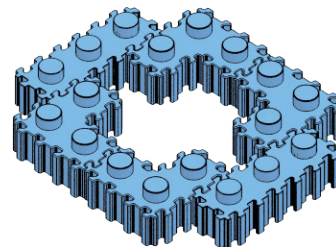
30



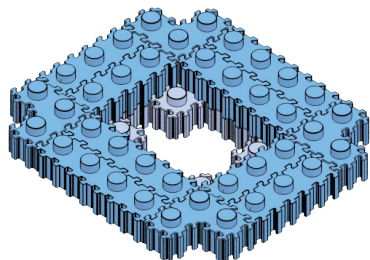
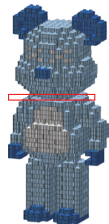
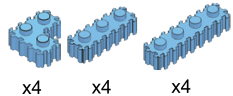
x4 x2



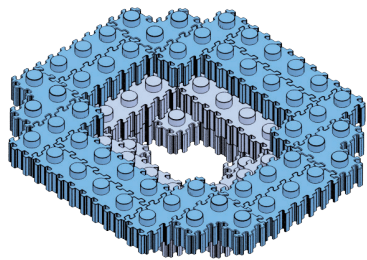
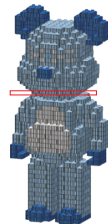
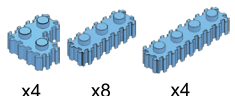
ATTACH THE ARMS



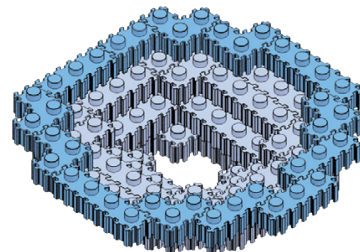
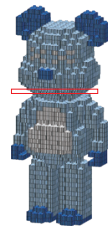
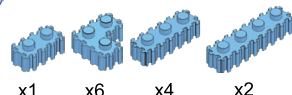
31



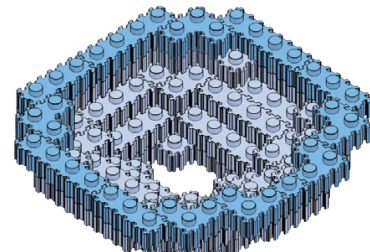
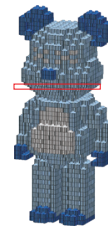
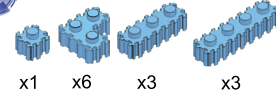
32

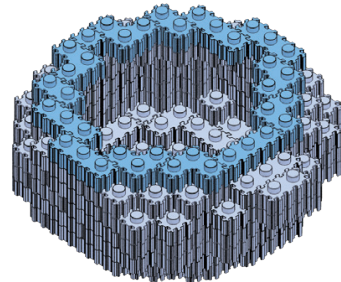
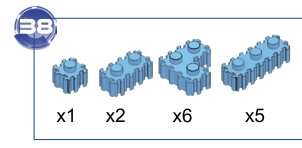
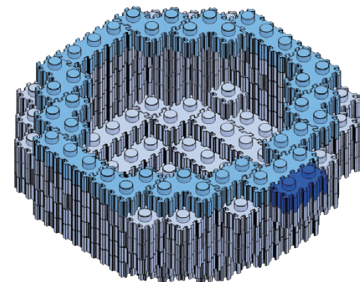
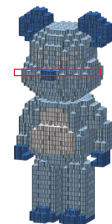
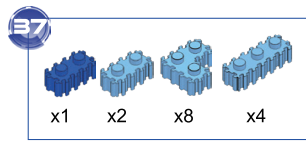
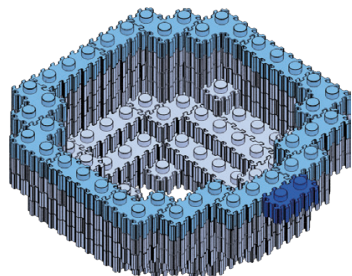
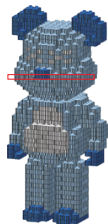
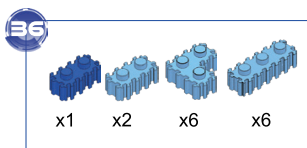
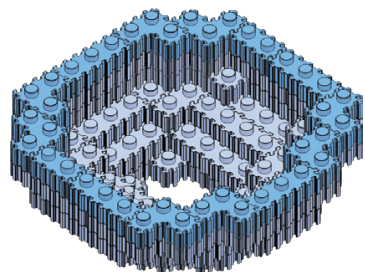
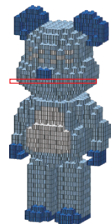
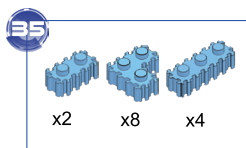


33

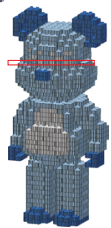
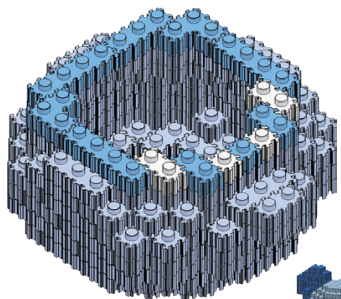
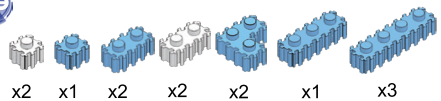


34

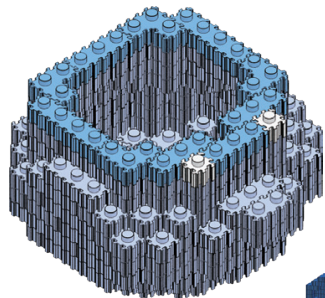




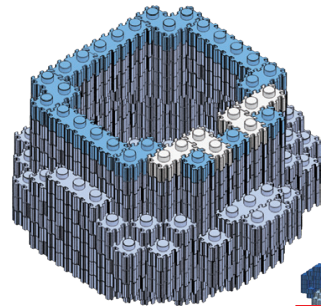
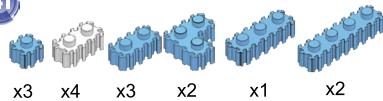
39



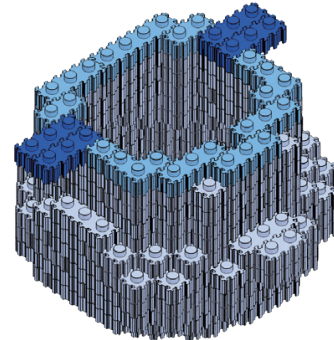
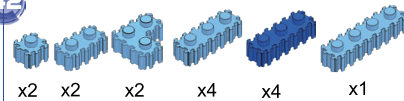
40



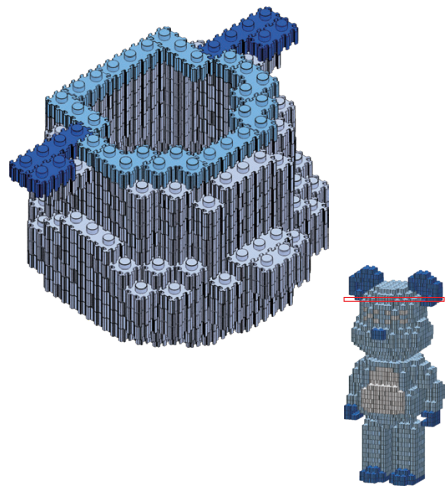
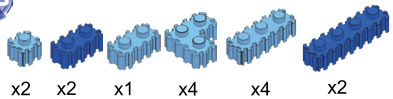
41



42

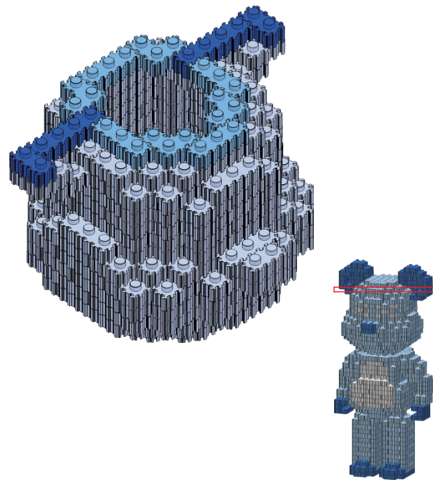
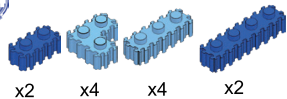


43

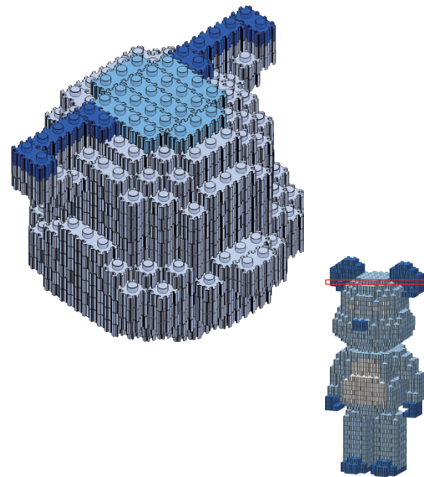
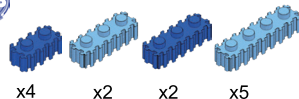


23

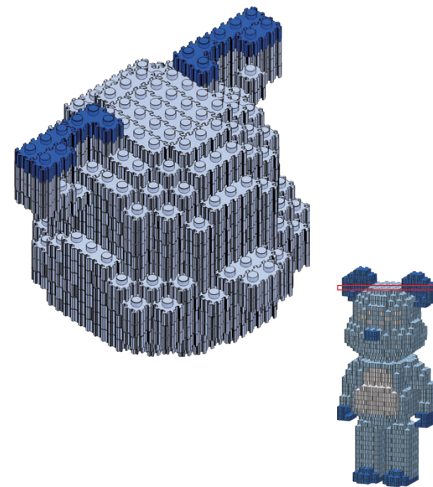
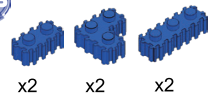
44



45



46

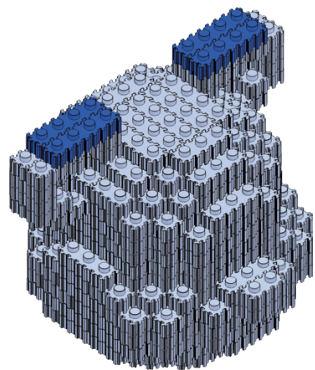


24

47



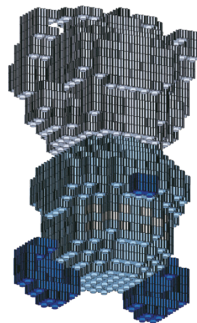
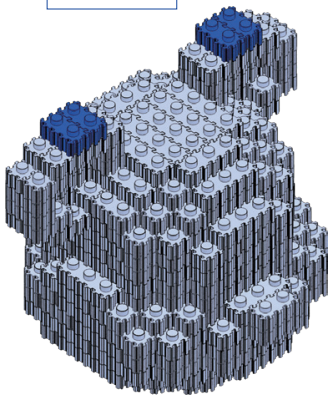
x4



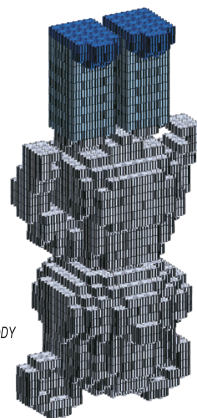
48



x4



CONNECT THE HEAD TO THE TOP BODY



CONNECT THE FEET TO THE WHOLE BODY

YOU DID IT!

Your model is now complete. Display and Enjoy!

