

# BRIK HAUS

BUILD, DESIGN, DISPLAY




# BRIK HAUS




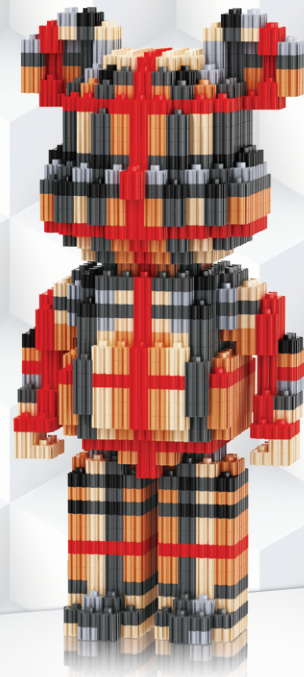
BUILD, DESIGN, DISPLAY

**773**  
**PIECES**

**18.8**  
**CM**  
**TALL**



 Hammer included for secure brick fitting.



## LUXE

ITEM NO: 68395

**WARNING:**  
**CHOKING HAZARD— Small Parts.**  
Not for children under 3 years.

**WARNING:** FOR SAFETY REASONS, REMOVE ALL PACKAGING, TAGS, LABELS AND PLASTIC FASTENERS BEFORE GIVING THIS TOY TO YOUR CHILD.

**ADULT ASSISTANCE IS RECOMMENDED.**  
**PRODUCT MAY VARY SLIGHTLY FROM IMAGE SHOWN.**  
**PLEASE KEEP PACKAGING FOR FUTURE REFERENCE.**



© 2026 Good Idea Global  
Suite 1(A)/207-209 Warrigal Road,  
Hughesdale, Victoria, 3166  
Melbourne, Australia  
[www.goodideaglobal.com](http://www.goodideaglobal.com)

1

WHEN YOU OPEN YOUR SET, DON'T DUMP ALL THE ZIGLOCK BRICKS INTO A BIG PILE.

KEEP EACH SET OF BRICKS IN ITS OWN GROUP. SORT THEM BY SIZE, SINGLE, DOUBLE AND TRIPLE AND THEN BY COLOURS.

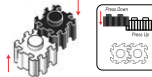
IT'LL MAKE BUILDING WAY EASIER AND MORE FUN!

2

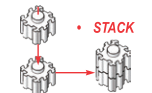
HOW TO PUT TOGETHER THE ZIGLOCK BRICKS:

LINE UP THE GROOVES AND SLIDE AND STACK TOGETHER.

• SLIDE

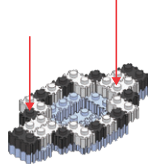


• STACK



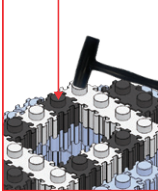
4

ARROWS SHOW WHICH BRICK CONNECTS TO THE NEXT LAYER OF BRICKS.



5

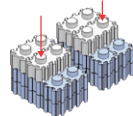
USE THE HAMMER TO GENTLY TAP THE PIECES SO THE LAYERS STICK TOGETHER TIGHTLY.



ADULT ASSISTANCE IS RECOMMENDED. PRODUCT MAY VARY SLIGHTLY FROM IMAGE SHOWN.

3

THE LIGHT BLUE PART SHOWS WHAT YOU FINISHED IN THE STEP BEFORE.



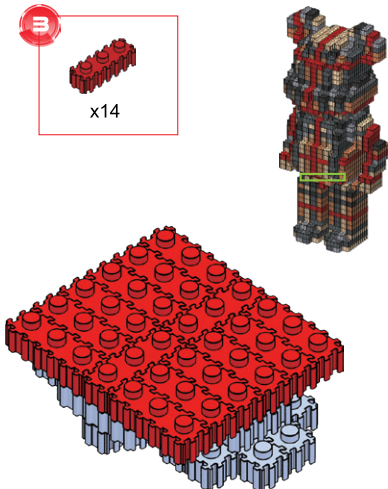
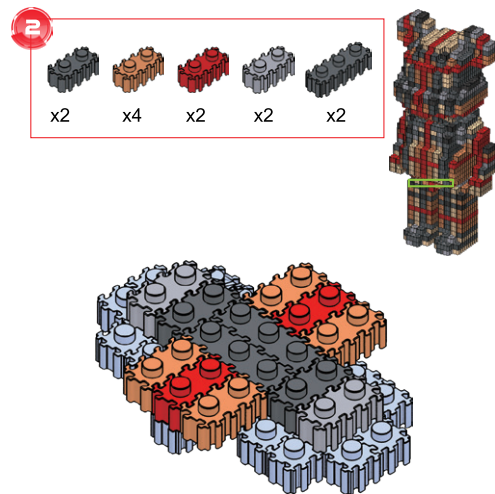
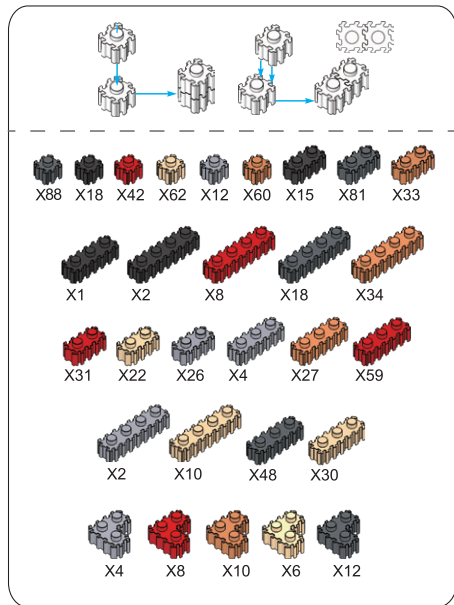
6

DON'T GIVE UP! ZIGLOCK BUILDS TAKE A LITTLE GETTING USED TO, BUT ONCE YOU ARE LOCKED IN, AND A FEW LAYERS LATER, YOU'LL BE BUILDING LIKE A PRO.

SCAN THE QR CODE FOR SOME VISUAL TIPS.

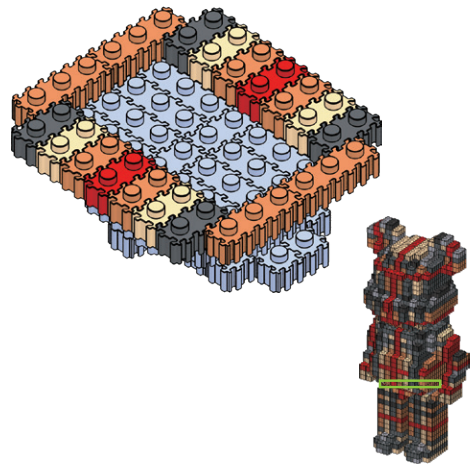
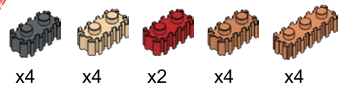


SCAN ME



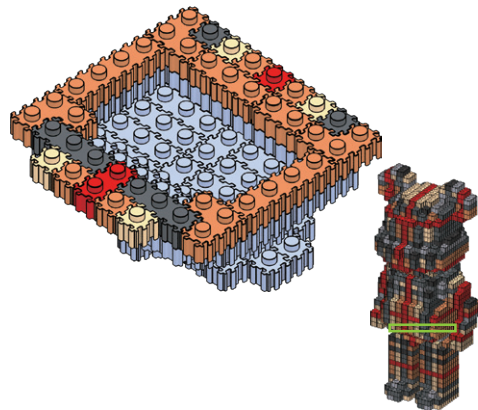
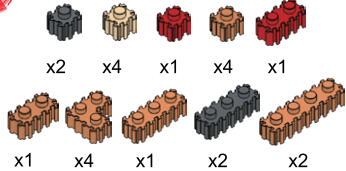
BUILD, SMART, TIPS

4



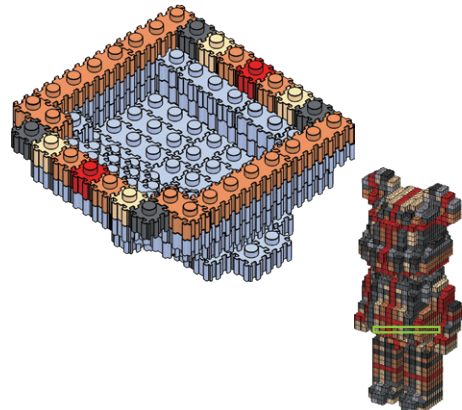
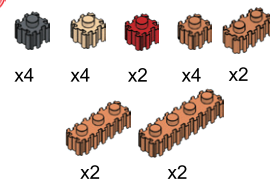
4

5

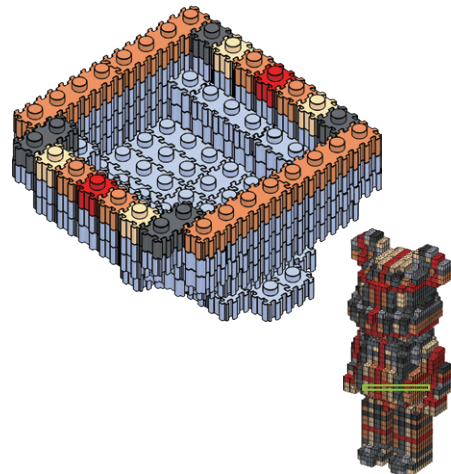


BUILD, SMART, TIPS

6



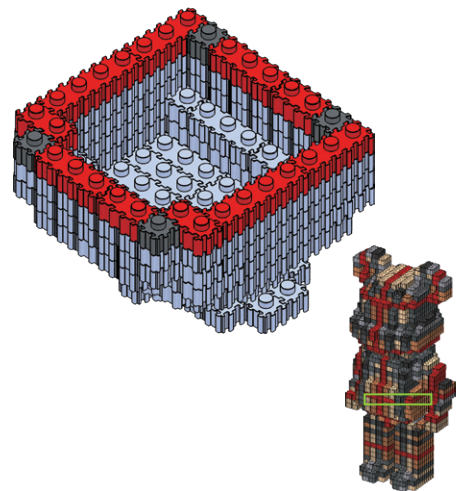
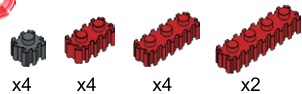
7



5

BUILD, SMART, TIPS

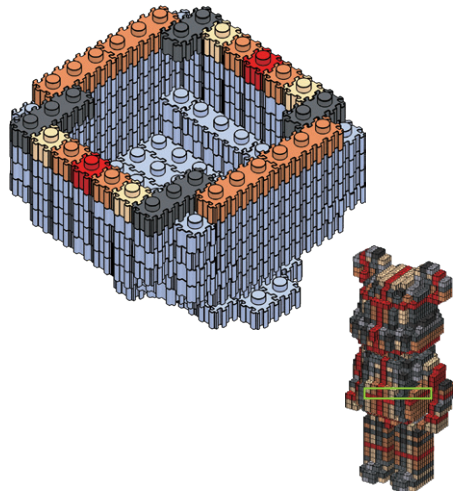
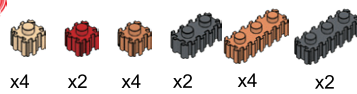
8



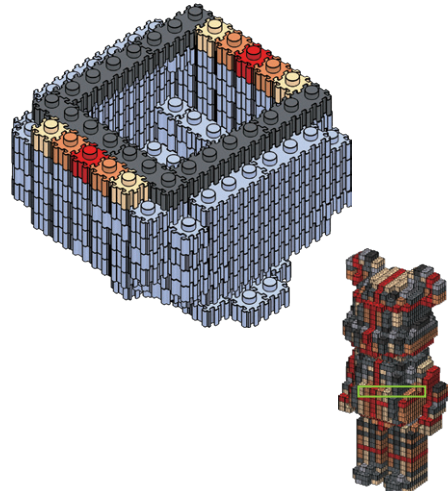
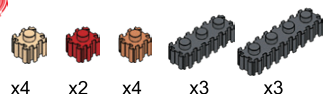
6

BUILD, SMART, TIPS

9

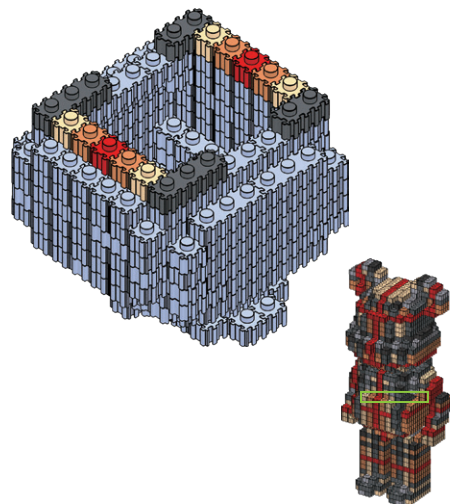


10



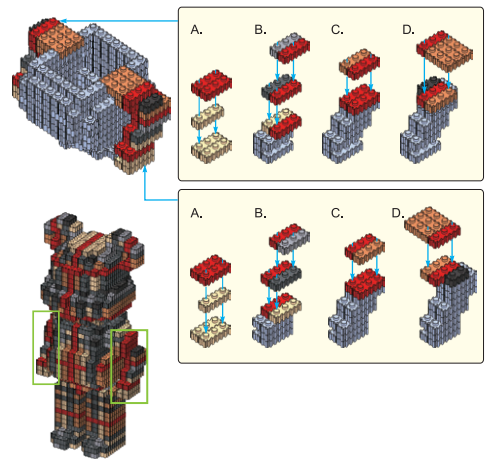
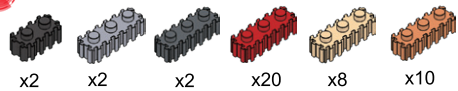
7

11



BUILD, SMART, TIPS

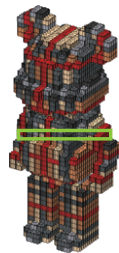
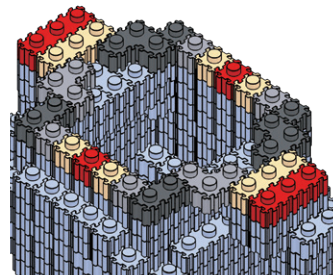
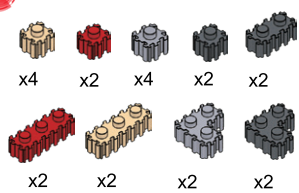
12



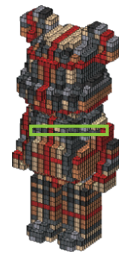
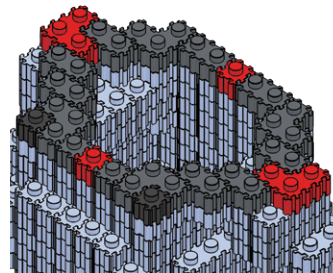
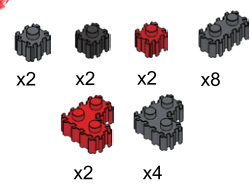
8

BUILD, SMART, TIPS

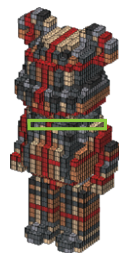
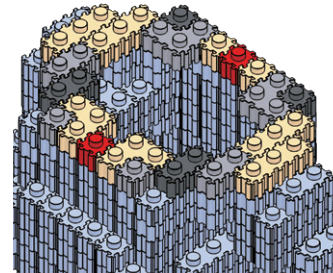
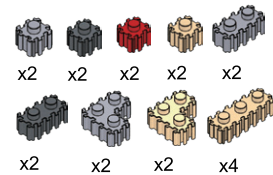
13



14



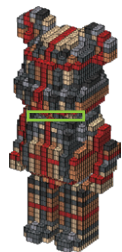
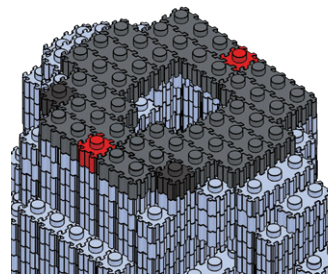
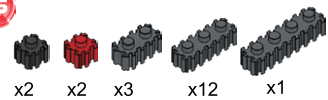
15



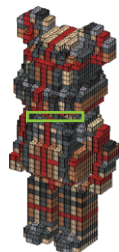
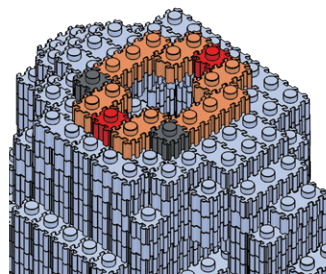
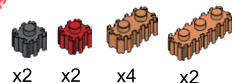
9

BUILD, SMART, TIPS

16

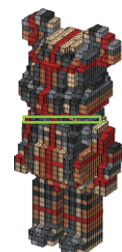
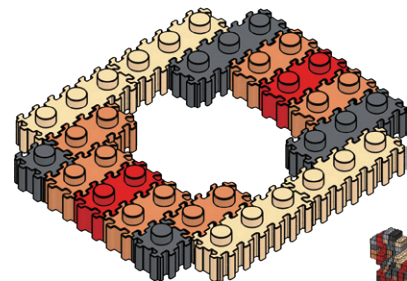
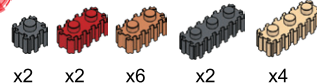


17

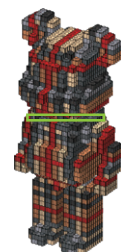
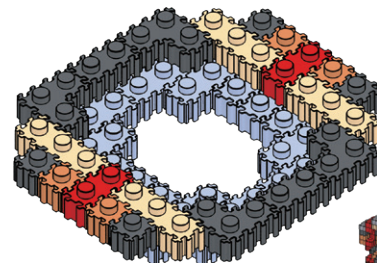
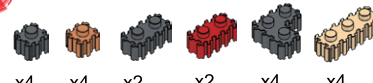


BUILD, SMART, TIPS

18

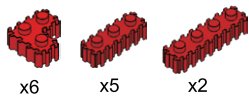


19

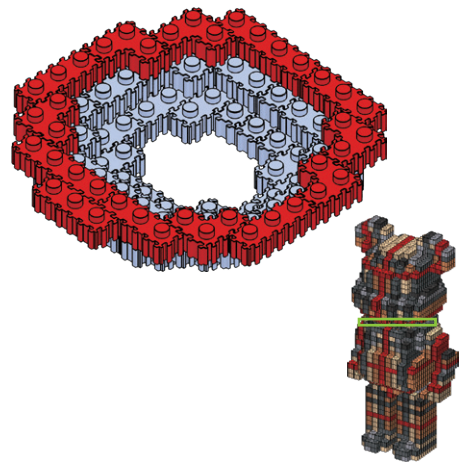


BUILD, SMART, TIPS

20

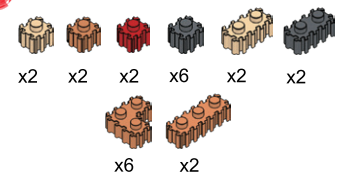


x6 x5 x2

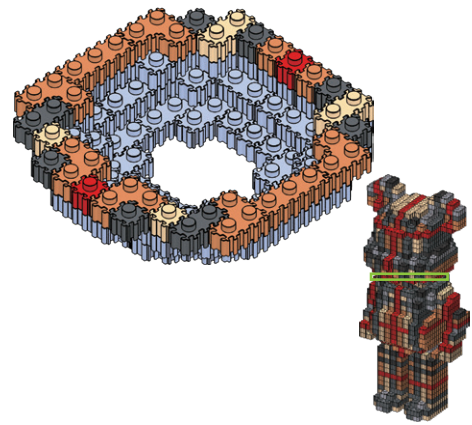


BUILD, SMART, TIPS

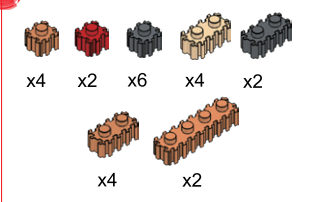
21



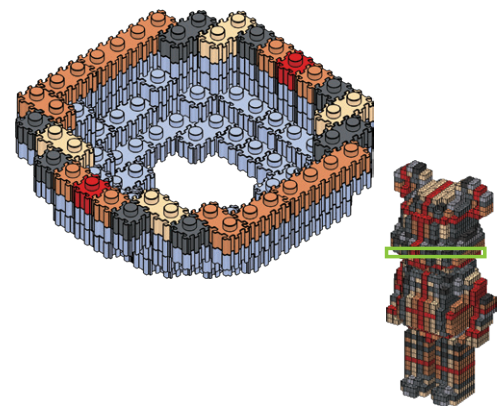
x2 x2 x2 x6 x2 x2  
x6 x2



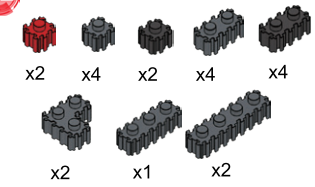
22



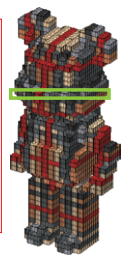
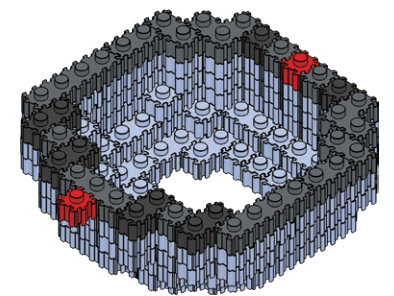
x4 x2 x6 x4 x2  
x4 x2



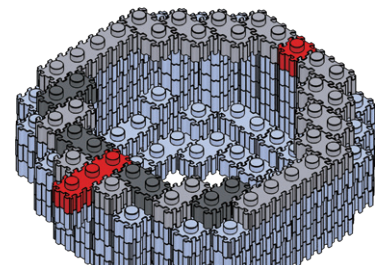
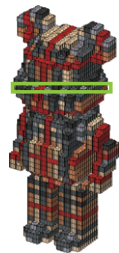
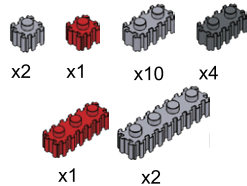
23



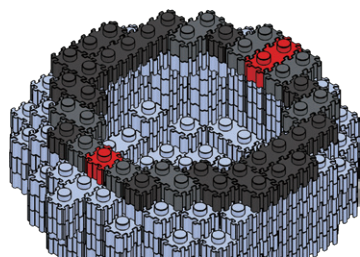
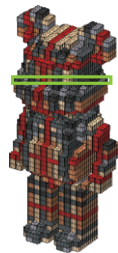
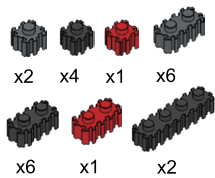
x2 x4 x2 x4 x4  
x2 x1 x2



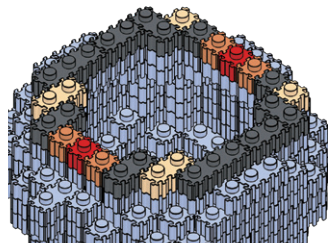
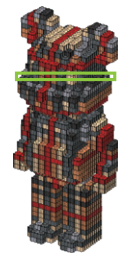
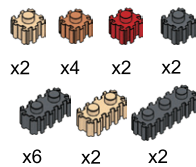
24



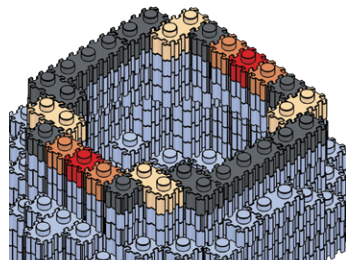
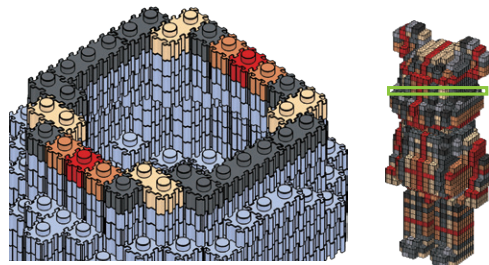
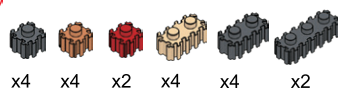
25



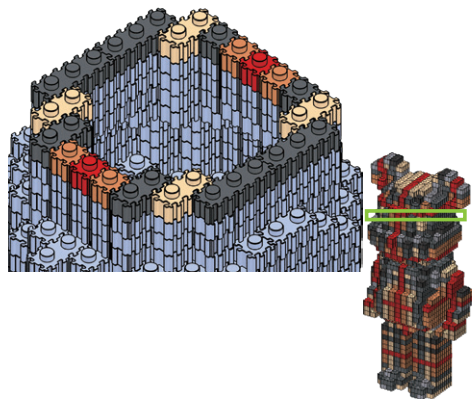
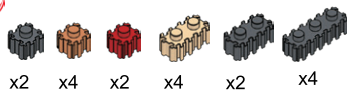
26



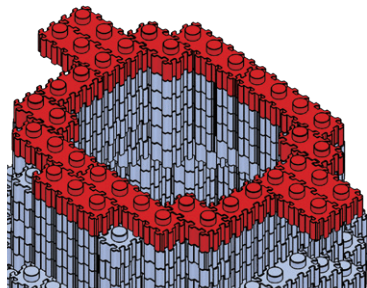
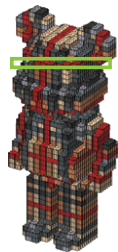
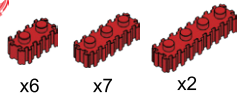
27



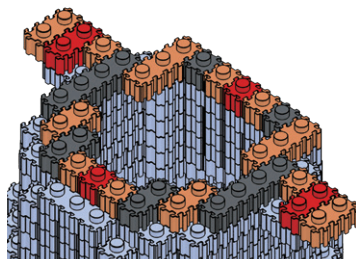
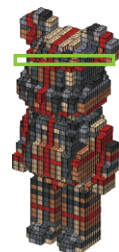
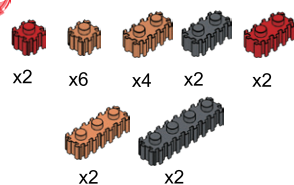
28



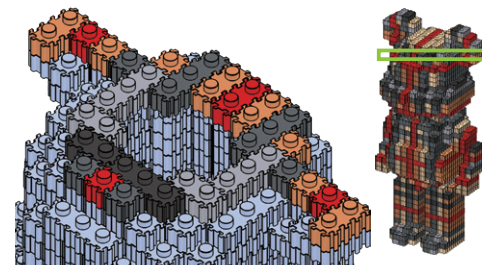
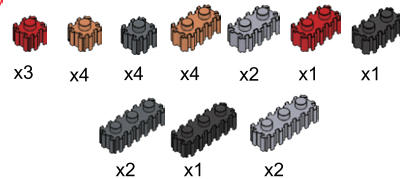
29



30

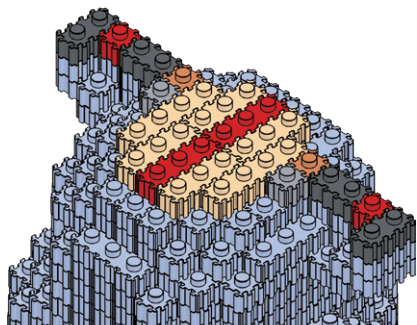
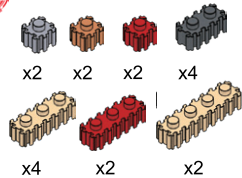


31



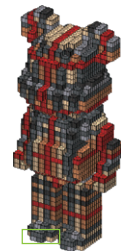
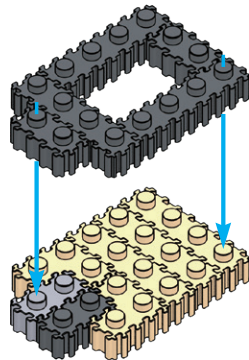
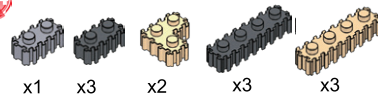
BUILD, SMART, TIPS

32

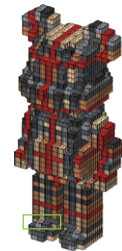
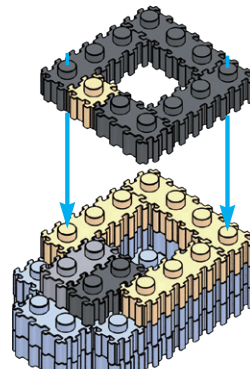
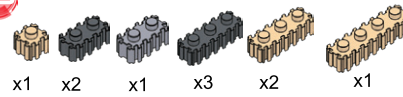


BUILD, SMART, TIPS

34

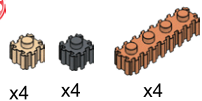


35

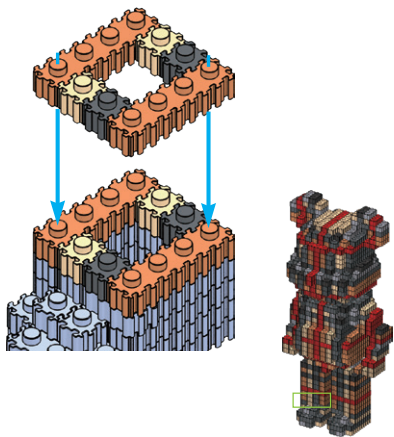


BUILD, SMART, TIPS

36

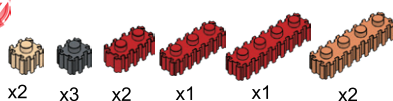


x4 x4 x4

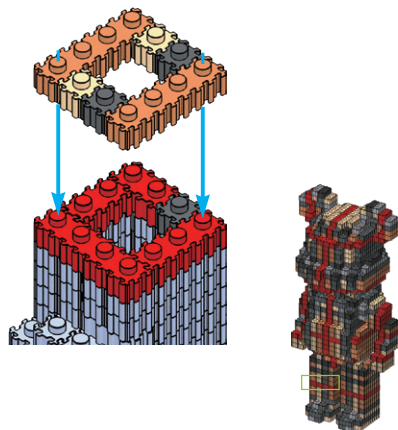


BUILD, SMART, TIPS

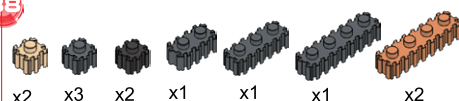
37



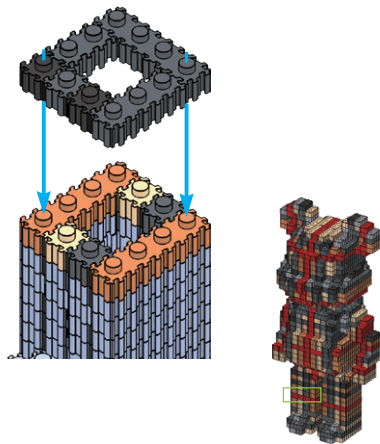
x2 x3 x2 x1 x1 x2



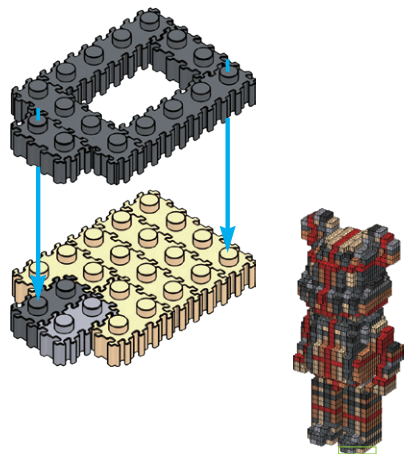
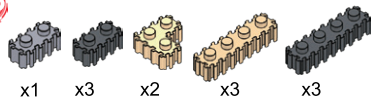
38



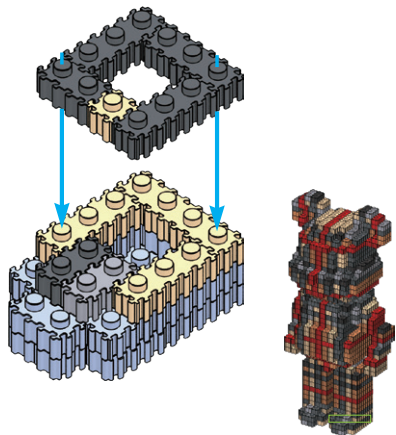
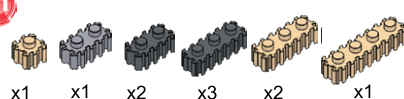
x2 x3 x2 x1 x1 x1 x2



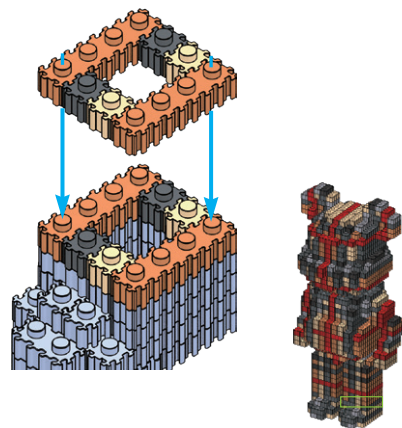
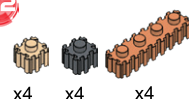
40



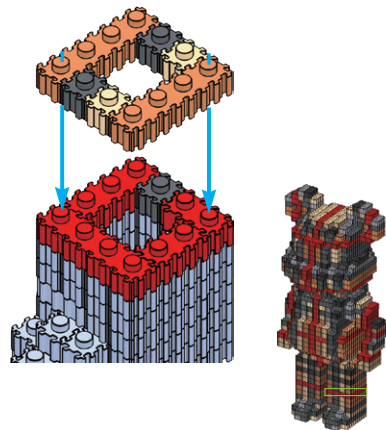
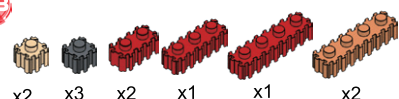
41



42

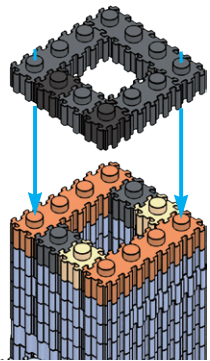
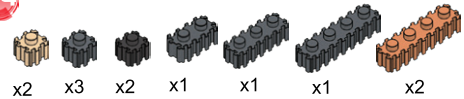


43



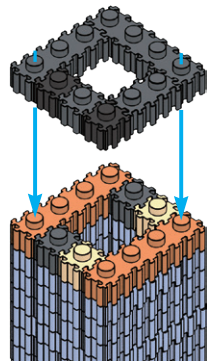
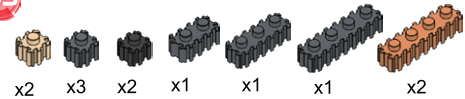
BUILD, SMART, TIPS

44



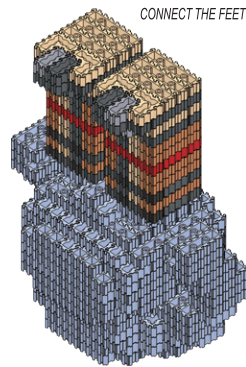
24

45



BUILD, SMART, TIPS

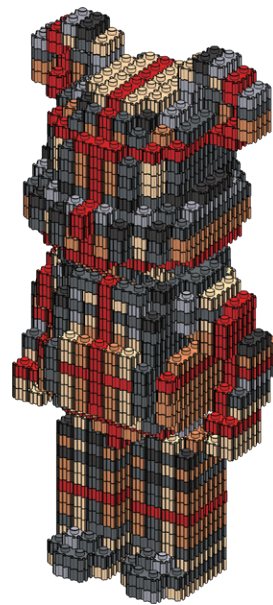
CONNECT THE FEET TO THE BODY



CONNECT THE HEAD TO THE BODY

YOU DID IT!

Your model is now complete. Display and Enjoy!



25